



YOUR GUIDE TO BALI

www.balitravelandtours.com

 balitravelandtour



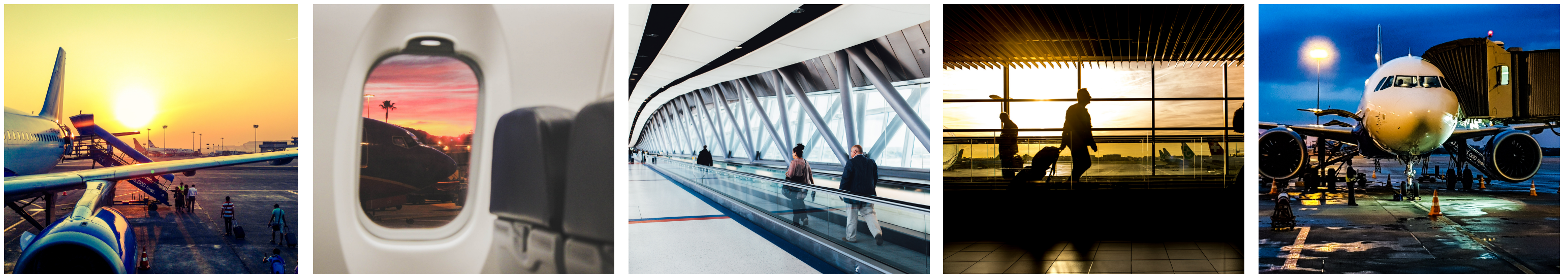
BALI CULTURE

Bali has a very rich and diverse culture with colorful traditions & customs that you will see and experience all over the Island. The culture is a mix of Balinese Hindu-Buddhist religion. The Balinese honor their ancestors and the spirit world, performing religious rituals based off the ancient Balinese Calendar. The Balinese wear traditional ceremony clothes during these times. It's easy to see why Bali is a much loved holiday destination from all walks of life. The Balinese people are very welcoming and friendly. So much to discover on this beautiful Island of the Gods.



AT THE AIRPORT

When you arrive at the airport, follow the instructions to pick up your luggage as usual. Don't be alarmed if you have to wait a while - things can move at a slower pace here in Bali. Then continue through customs as usual. You will be granted a 30 day visa on arrival. Once you have been cleared through customs, continue through to the pick up area. There you will find a lot of drivers holding signs, however don't be overwhelmed. Look out for our driver holding a sign with your name on it. Please note: if for any reason you are having trouble at the airport or are unable to find your driver, do not worry, you will be able to connect to the airport wifi and contact us on WhatsApp.



VISA & IMMIGRATION

All international traveler's coming to Bali MUST CHECK that you have a minimum of 8 months left on your passport for a maximum of 30 days days, not extendable and minimum of 12 months for 6 months maximum stay. If you do not have the required time you will be turned around at the airport and your holiday ruined.

Bali gives all traveler's a 30 day visa on arrival which is included in your airfare ticket. If you wish to extend past the 30 days then you MUST pay for a visa on arrival which will allow you to then extend for another 30 days. There are other options for people who want to stay longer, work & business.

REGULATIONS CHANGE REGULARY SINCE COVID - PLEASE CHECK WITH US FIRST TO SEE WHAT IS UP TO DATE.



THE WEATHER IN BALI

Bali has a warm & hot climate all year round. The tropical monsoon climate has two seasons, the dry (April to September) and the wet (October to March). The wet season can be very unpredictable in Bali with some years not seeing much rainfall at all. Don't let the wet season put you off travelling to Bali as there are many beautiful sunny days. A magical Island where you have so much to offer to discover, explore and relax.



CURRENCY

The rupiah is the official currency of Indonesia. The currency code for the Indonesian rupiah is IDR and the symbol is Rp. Every business is legally obliged to charge for their services in IDR, therefore it is the dominant currency. There are many ATM's located all over Bali and many restaurants also accept visa and mastercard, but it's also important to have some cash for the places that don't. ATM's are best used at any of the local banks. Don't forget to let your bank know that you are travelling overseas and it's always a good idea to bring a spare (back up) card in case you lose one. Coins come in Rp. 50, Rp. 100, Rp. 200, Rp. 500 and Rp. 1,000. Notes come in Rp. 1,000, Rp. 2,000, Rp. 5,000, Rp. 10,000, Rp. 20,000, Rp. 50,000, and Rp. 100,000. Carry cash on you at all times, the small money is great to pay for parking, tips, a cold drink, market shopping, cabs and some places don't have eftpos. There are many money changes in Bali however we highly recommend you find a reputable exchange and always count back your money.



INTERNET & MOBILE PHONES

To use your phone here in Bali, we encourage you to buy an Indonesian sim card. For approximately \$10 USD you can buy a sim card with more than enough data to last your entire trip. This usually works out to be cheaper than using a roaming pack from your local provider. Most people here communicate through "Whatsapp" so make sure it's downloaded on your device and don't forget to let your loved ones know how best to get a hold of you when you're overseas. Most places have WIFI you can connect to, however having your own sim card makes it much easier getting around with Google Maps and staying connect to friends & family. Telkomsel & XL Axiata are two popular providers that have great cheap packages available. You will need your Passport to register a sim card. There are many locations throughout Bali to get this done. Bali also has an ever-expanding co-working space community. A quick google search will find a location nearest to you.



DRIVING & RIDING IN BALI

Please understand and follow the rules when considering driving a car or riding a scooter in Bali. The last thing you want is to be setting up a GoFundMe page asking people for help because your insurance company has declined to help. If you wish to drive a car you must hold a current Driver's Licence in your own country as well as an International Driver's Licence. If you want to ride a scooter you must hold a valid Bike Licence in your own country as well as an International Driver's Licence. Driving & Riding in Bali is not for everyone. If you are nervous, then please stay off the road! Bali is left-handed traffic. Some little tips; you will hear horn honking A LOT – this can mean a few things, I'm coming past, notice me, please move, look out (you get the drift) so use the horn yourself to do the same with other's on the road. Changing / crossing lines is normal and happens all the time so just go with it. Remember the main rule - whatever you can see in front of you is your responsibility, so people cutting out in front of you on the roads is actually normal! Go slow, always be alert and if riding a bike, WEAR A HELMET.



TRAVEL INSURANCE

Always get travel insurance when going on an adventure anywhere in the world. Accidents are not something we plan, but they do happen. Be a smart traveler and do not ride or drive if you don't have the correct licences. There are many great reputable insurance companies that will cover your trip and won't cost a fortune.



SOCKETS, PLUGS & ADAPTORS

Bali uses a 2 pin socket and plug. Adaptors are easy to find in many stores, however it's a good idea to buy one before arriving so you are not left with a flat mobile phone. The standard usage for the pin point socket is; Voltage: 230V, Frequency: 50Hz, Power Sockets: Type C/F. If the standard voltage in your country is between 220-240V then it is safe to use your electrical appliances in Bali. If you are unsure, check the label on your appliances & equipment.



BALINESE CALENDAR

Stay up to date with the Balinese Calendar and avoid certain holidays that may interfere with your travel plans. Jump on Google to find one.

OTHER THINGS TO REMEMBER

- Respect the culture and the people. Balinese people are very warm and friendly. If a disagreement happens, react in a calm way to try and solve it. Getting angry and being violent will get you nowhere good.
- Traffic can be very crazy in many areas at times. So chill, relax and take it slow. Road rage is not a thing here.
- NEVER EVER do drugs in Bali unless living the rest of your days in Kerobokan Jail seems like a good idea.
- Be careful when drinking spirits - unfortunately not all of them are what they should be. We recommend sticking to bottled drinks unless you can trust the source.
- Ice cubes are ok in your drinks. The ice cube water is Government regulated.
- If Bali Belly is a concern for you - stay clear of salads. You never know how they are washed and cleaned so it's best to avoid and eat cooked meals.
- Most eating & drinking places are subject to 10% Government Tax and 5-6% Service Tax which is generally added on top of your bill.
- Scooter rental is around 50,000 to 80,000 per day depending on the style of bike you choose. These prices can be negotiated for longer periods. You will need to show your passport. Don't be stupid and rent without insurance cover and the correct licences.
- There are many taxi services in Bali. Always ask for the meter to be on if a metered car. If it's a private driver, always negotiate and agree on a price before proceeding.
- Go-Jek & Grab are very popular apps to download onto your phone. Everything from scooter/car pick up, food delivery, cleaning service, groceries, massage and so much more.
- Whatsapp is the most popular messaging and calling service in Bali - we highly recommend you download it to stay in touch with family & friends at a very cheap rate. Many places throughout Bali use this service.
- Download the Balinese Calendar so the holidays don't interfere with your travel plans.
- Be careful in the rainy season and by the pools. Water makes the tiles and ground very slippery all over Bali. Sidewalks can have some deep holes in them - always be alert when walking.
- Don't smile at the Monkeys if you visit the Monkey Forest - showing teeth is a sign of aggression. We also recommend that you keep valuables hidden and don't wear jewelry. They can be cheeky little buggers!
- The ocean can be dangerous at times so please stick to the flagged areas and do not swim if you are not experienced.
- There is crime in Bali like anywhere else in the world. Be a smart traveler. If something feels dodgy, it most likely is.
- There is prostitution in Bali and HIV is widespread. Not only is it illegal, it's not worth the risk!
- Plastic & rubbish is still a huge problem. Make sure you always recycle where you can and put your rubbish in the bins. The Government has made some big changes, however there is still an issue. Be part of the solution, not the problem.
- Do not drink the tap water. The water is not clean enough for drinking. Stick to bottled water.





ISLAND

OF THE



GODS

WWW.BALITRAVELANDTOURS.COM